



u\_e saying /yoo/

# A Visit to Albert Einstein



Today, we are learning to read words that contain  
**u\_e** saying /yoo/.



**u** and **e** are cheeky partners. When **u** and **e** work together, they say /yoo/.

**u** and **e** are too cheeky to sit together so they have to have a letter sit between them.

Let's read these words.

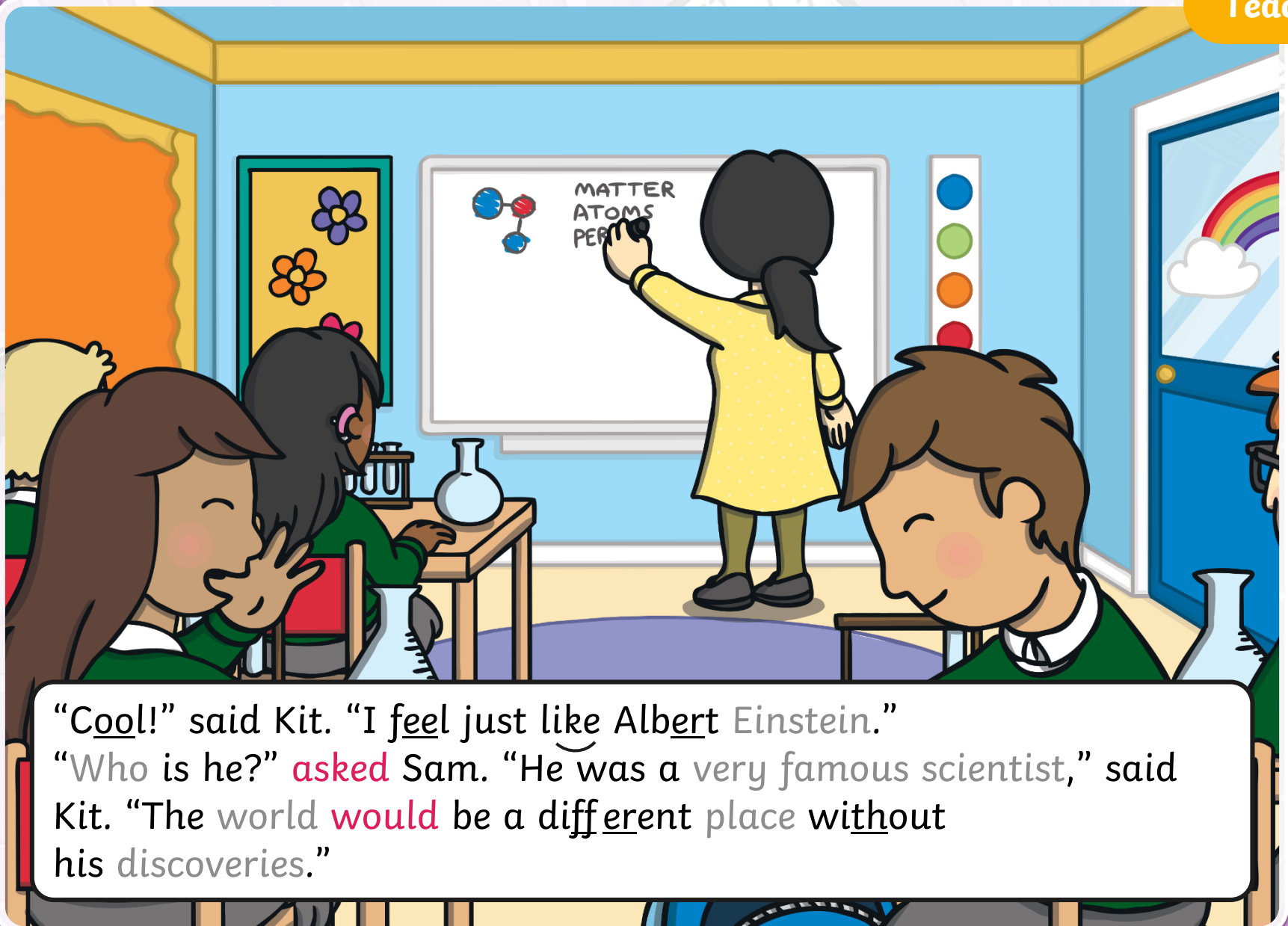
**use**  
**tune**  
**cute**  
**refuse**

x





Kit and Sam were in a school science lesson. “Today, we will use a test tube to do an experiment,” said their teacher, Mrs Tan. “Then, you will all complete a science project for your homework. Take a test tube home as you will need to use one for your project.”



“Cool!” said Kit. “I feel just like Albert Einstein.”

“Who is he?” **asked** Sam. “He was a very famous scientist,” said Kit. “The world **would** be a different place without his discoveries.”



Sam wanted to find out more about Albert Einstein. “I have an idea,” said Kit and he took out the magic watch. “Let’s go and meet him...he **could** even help with our science projects!” The room began to fade...

Kit and Sam found themselves outside a huge white house. “Where are we?” asked Sam.

“This is Albert Einstein’s home in America. We must be in about the year 1935. That is when he moved to this house.”



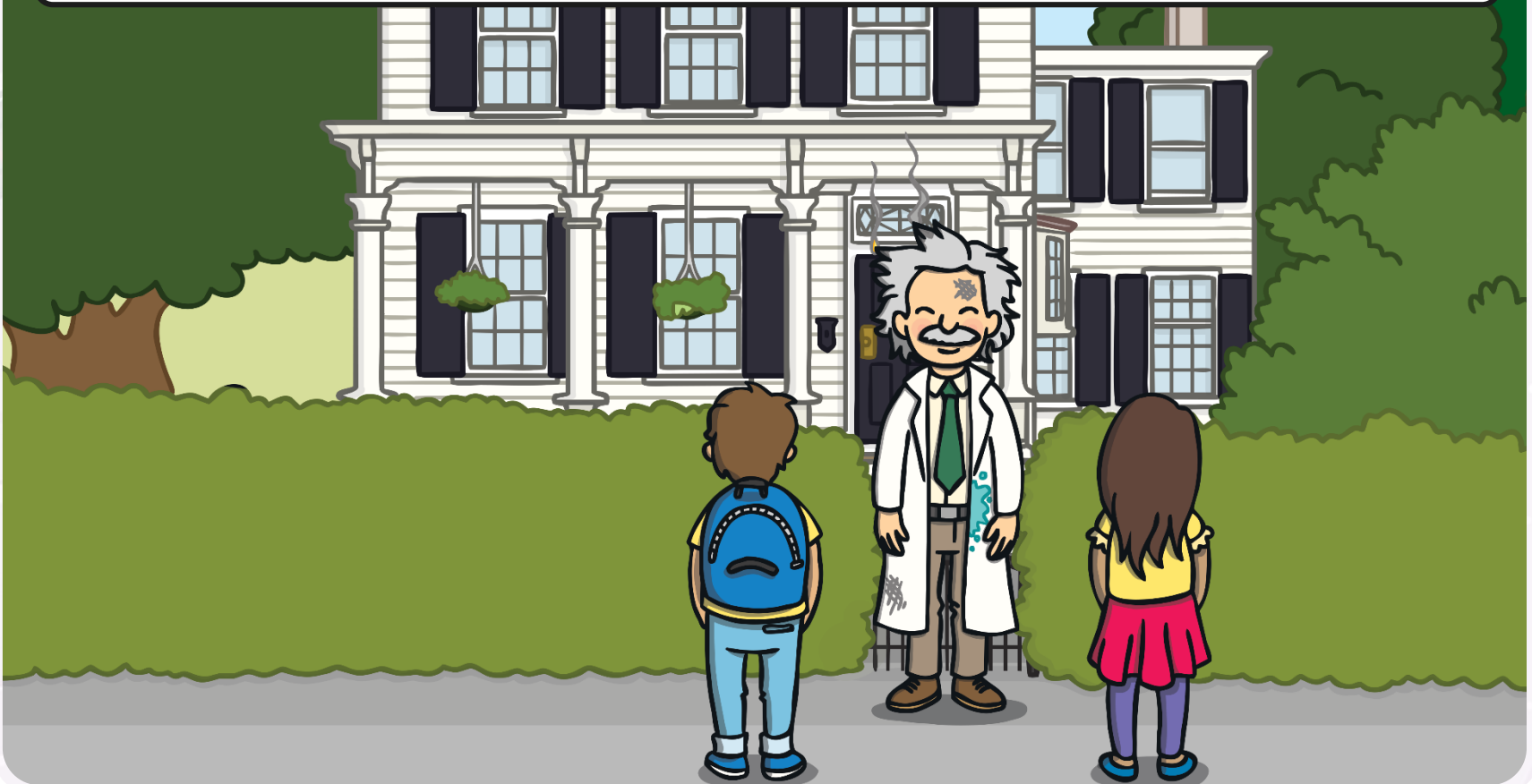




Sam **looked** around as Kit put away the magic watch. “Do you think we **should** have **called** and **asked** whether we **could** visit first?” **asked** Sam nervously.

# Sentence Time

Suddenly, a grumpy-looking man appears from the house and looks up and down the road. What does he say?



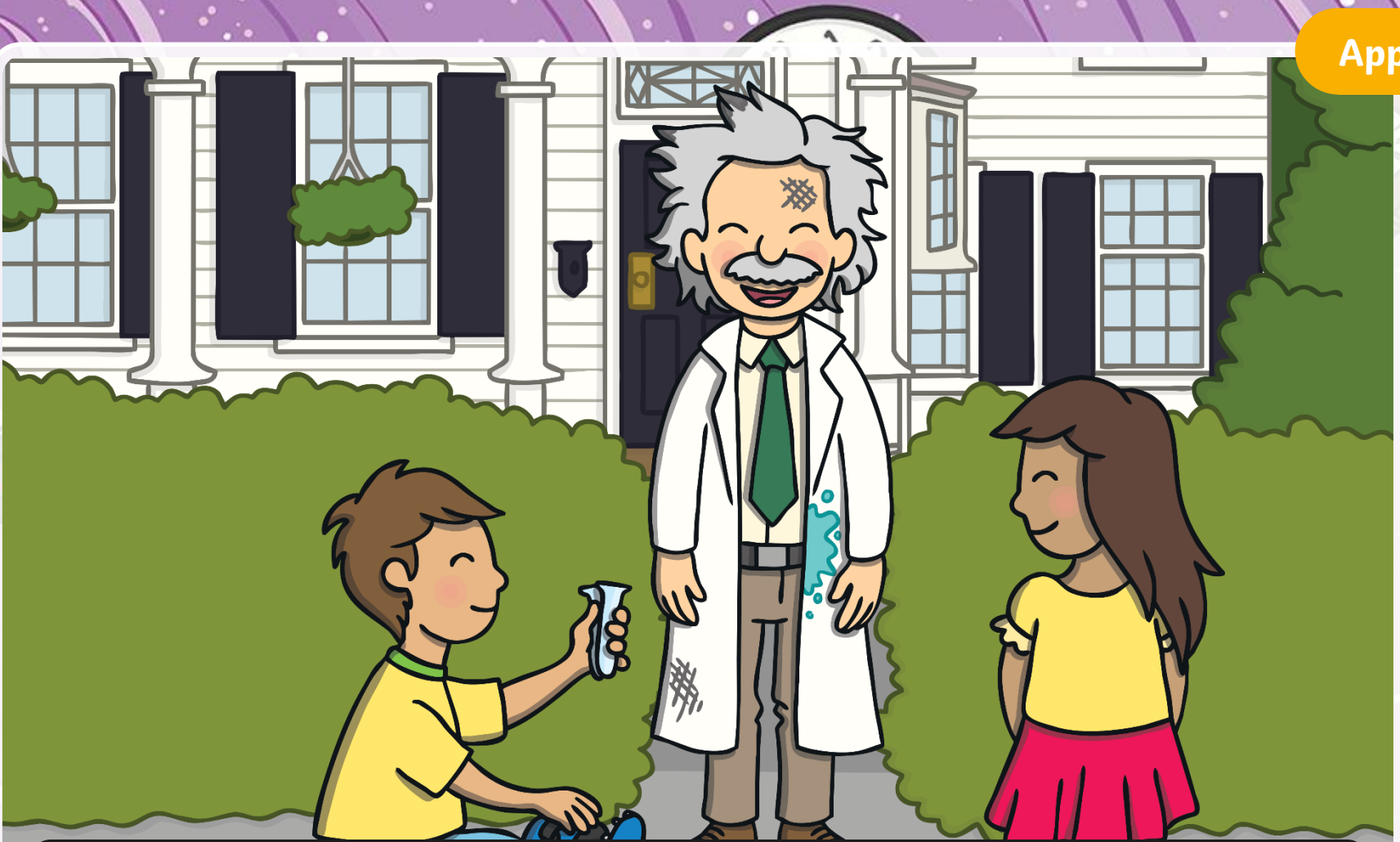


“I **asked** for a test tube but the mailman has not **called** yet!”

Sound Buttons On/Off

Show





The man saw Kit and Sam standing outside his house. “Are you the mailman with the test tube I need to use?” he asked Kit. “No,” replied Kit. “But I might be able to help you...”

Today, we have learnt...

**u\_e**  
saying /yoo/

The adventure continues next lesson!

