



e \_ e saying /ee/

# Finding a Theme



This week, we are learning to spell the common exception words **what** and **could**.

Watch the magic pencil write the words.  
Can you join in?



Teach

what



Play



Teach

could



Play





Today, we are learning to read words that contain  
**e\_e** saying /ee/.

'e\_e' is a split digraph! The first vowel is elongated as a result of the second vowel 'e'. For example, the 'e' in 'pet' is short but the first 'e' in 'Pete' is long.



Click me for Kit's teaching tips!

**e** and **e** are cheeky partners. When **e** and **e** work together, they say /ee/.

Sometimes, **e** and **e** are too cheeky to sit together so they have to have a letter sit between them.

Let's read these words.

eve  
theme

You can teach children to say the split digraph first 'e\_e' before the letter in between i.e. /ee/ /v/. It may help some children to explain that the last 'e' is telling the first 'e' to say its name and that they shouldn't make the final /e/ sound.



Click me for Kit's teaching tips!





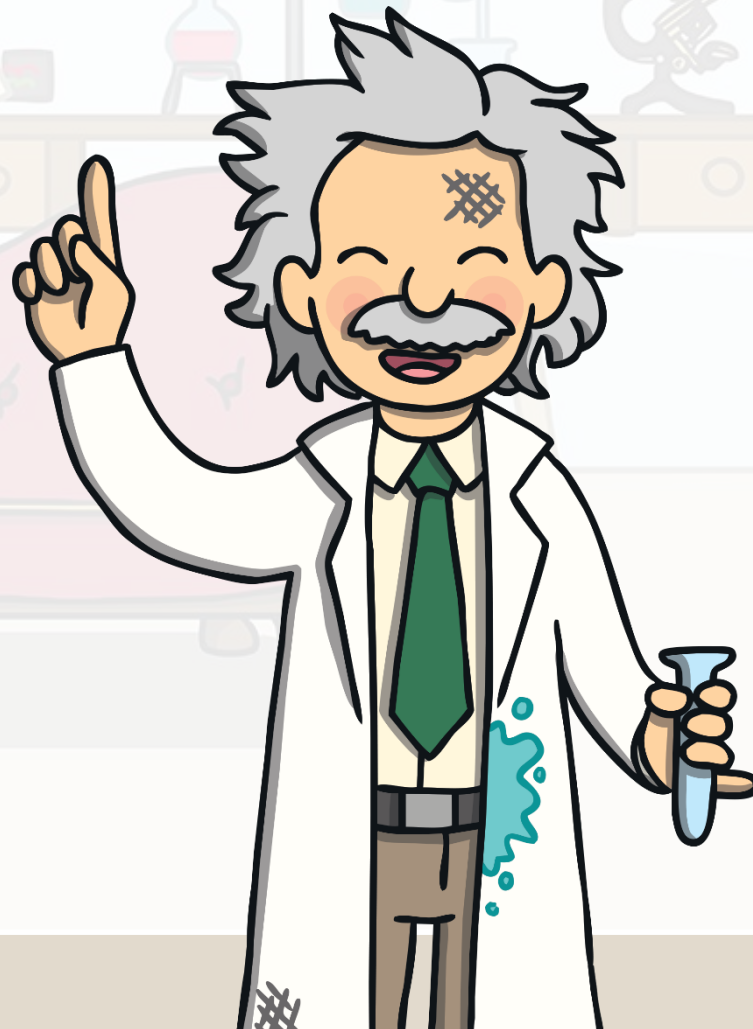
The famous scientist Albert Einstein had agreed to help Kit and Sam with their science project. “Wow,” whispered Sam. “I can’t believe he is going to help us complete our project.”



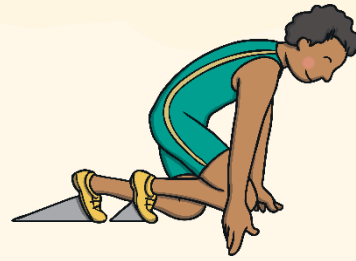


“Of course,” smiled Sam. “Well, how about we begin by deciding on a theme for our project? Do you have any ideas? Kit and I have not even thought about it yet!”

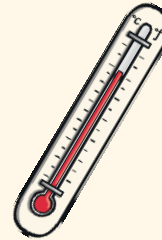
Albert is writing a list of all the themes they could choose to complete their science project on. Can you read the list as it appears?



athletes



extreme heat



Japanese trees



concrete

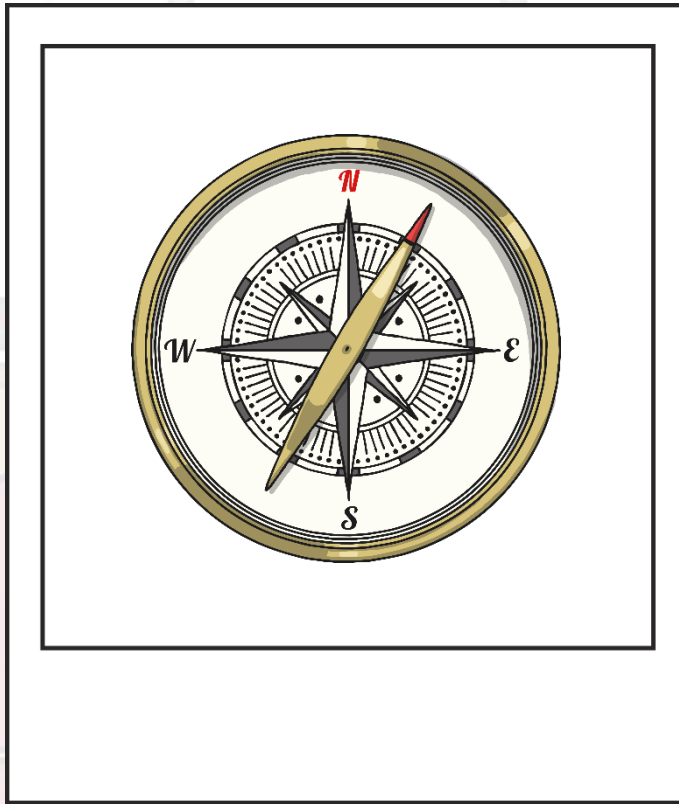


# /ee/ Sound Spot

Albert shows Kit and Sam some old photos of things that inspired him in his work.  
What **ee**, **ea** or **ee** sounds can you spot in the captions underneath?



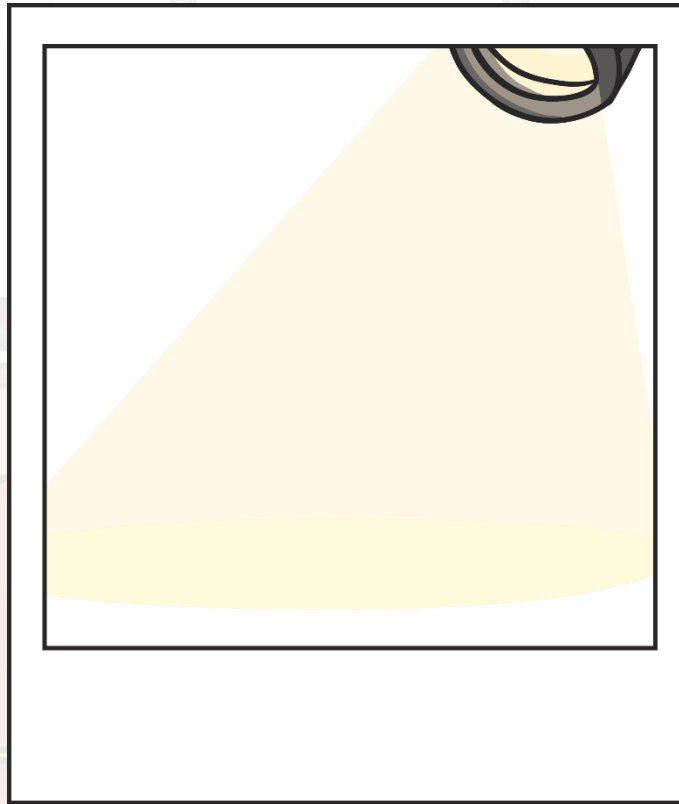




A compass used by sailors at sea.

Show

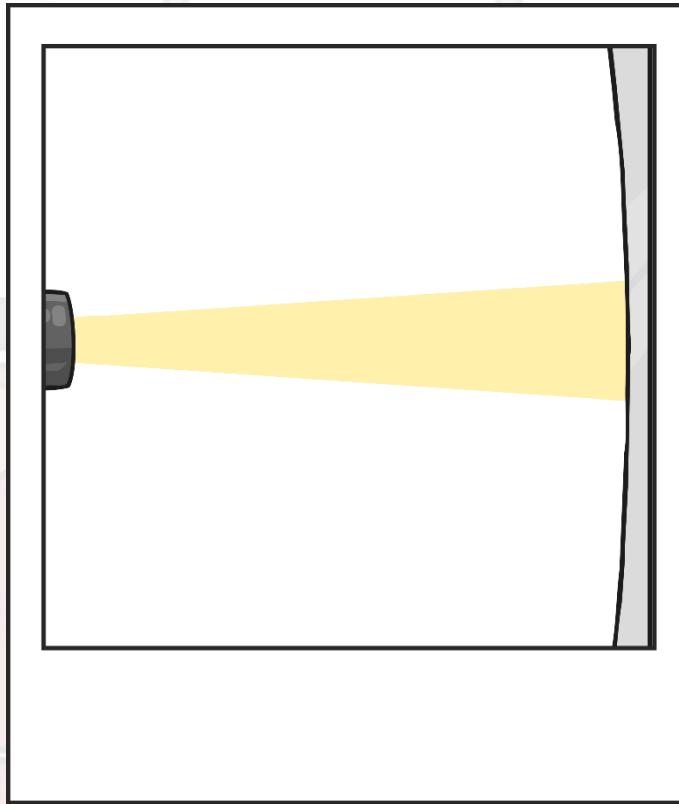




A beam of light.

Show





Extreme speed.

Show





The need to complete a theory.

Show







“Oh,” said Sam to Kit. “These pictures have given me an idea! We need to think of a theme that inspires us,” she said, looking down at the magic watch with a grin.”

# Sentence Time

What does Sam whisper to Kit?  
Read the sentence then click 'Show' to reveal the answer!



“The theme could be time and the project could be called ‘Time Travel!’”



Sound Buttons On/Off

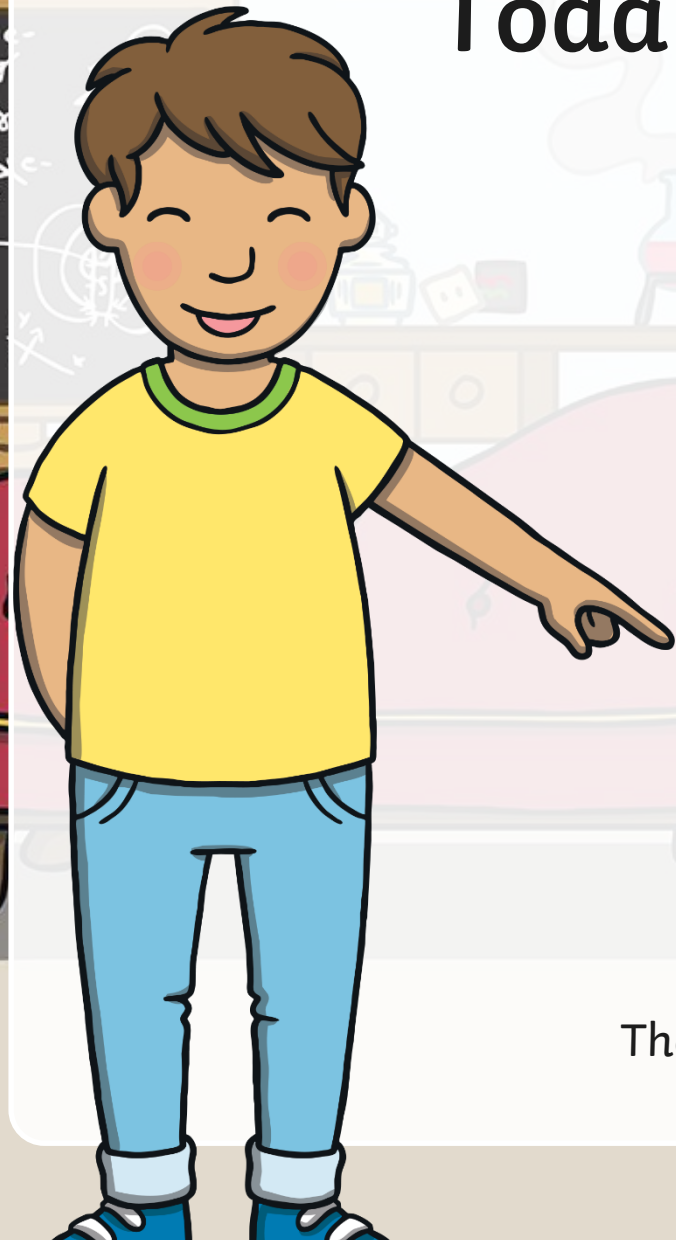
Show







Today, we have learnt...



**e\_e**  
saying /ee/

The adventure continues next lesson!