



ch saying sh

Christmas Activities



This week, we are learning to spell the common exception words **Mr** and **Mrs**.

Watch the magic pencil write the words. Can you join in?



Mr



Mrs



Today, we are learning to read words that contain **ch** saying /sh/.

We have already learnt that the sound 'ch' can make a /ch/ or /c/ sound, however it sometimes makes a /sh/ sound, too.



Click me for Kit's teaching tips!

Sometimes, when we see **ch** it makes a /sh/ sound.

chute

chef

para**ch**ute

Often words with 'ch'
saying /sh/ are words with
a French origin!

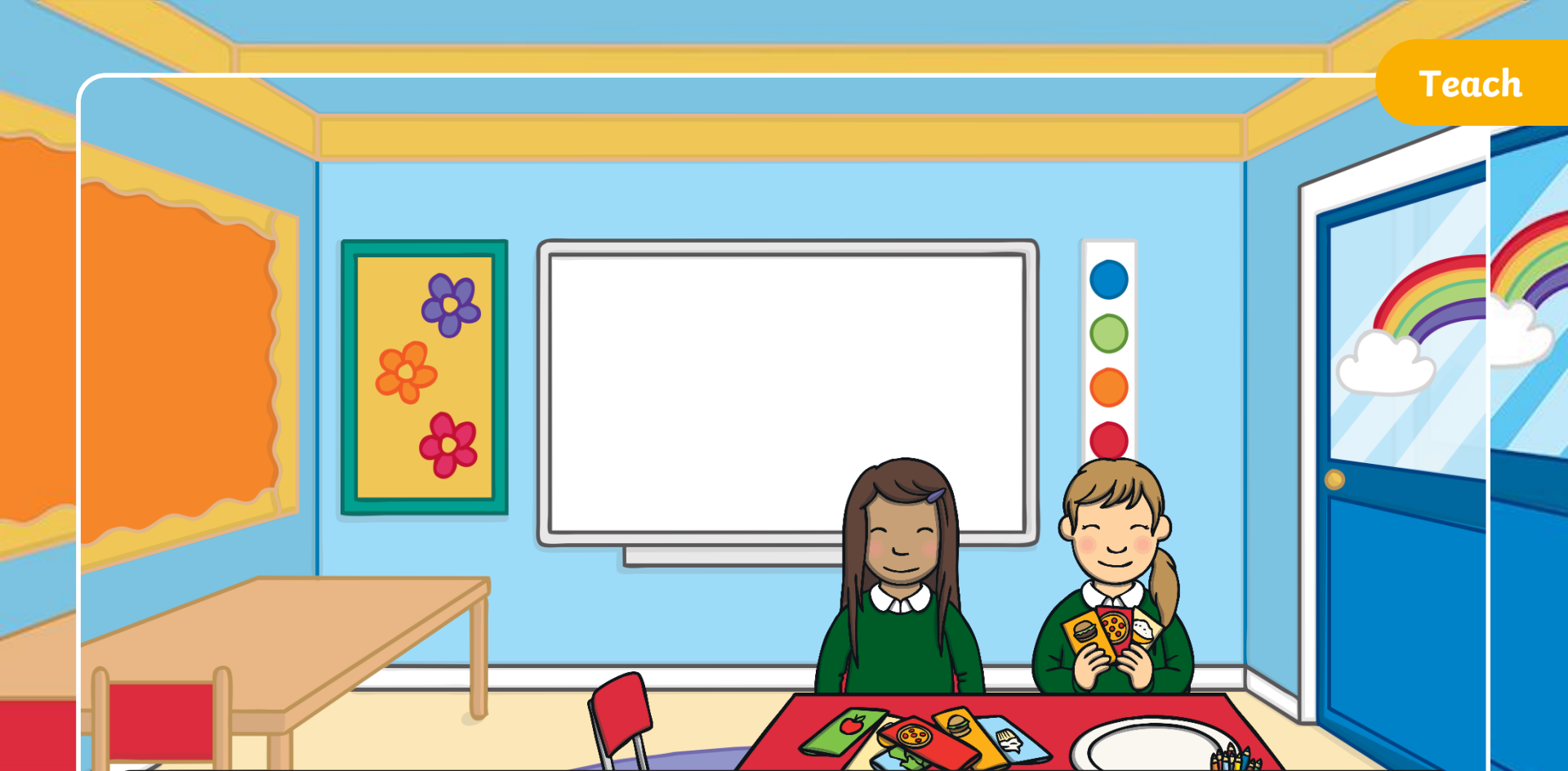
x

Click me for Kit's teaching tips!





Today, the children were doing some Christmas tasks at school. Mrs Tan had split the class into small groups. Gabi and Sam were going to design a Christmas meal for Santa and Kit's group are designing a way to load things onto the sleigh.



“My name is Charlene the Chef!” giggled Sam. “I **would** give Santa lots of yummy treats to eat,” she said to Gabi.

“**Oh**, I am Charlotte the Chef!” laughed Gabi. “I’m looking **through** these leaflets about food. I **thought** they **would** give us some ideas.”



Meanwhile, as the girls were busy pretending to be chefs, Kit was working with a group of children on a different task. **Their** job was to come up with a way to help Santa and his elves quickly load up the sleigh with presents.

Present Labels

Kita and his group are helping to sort the presents by labelling them with different **ch** words.

Read the ch words.







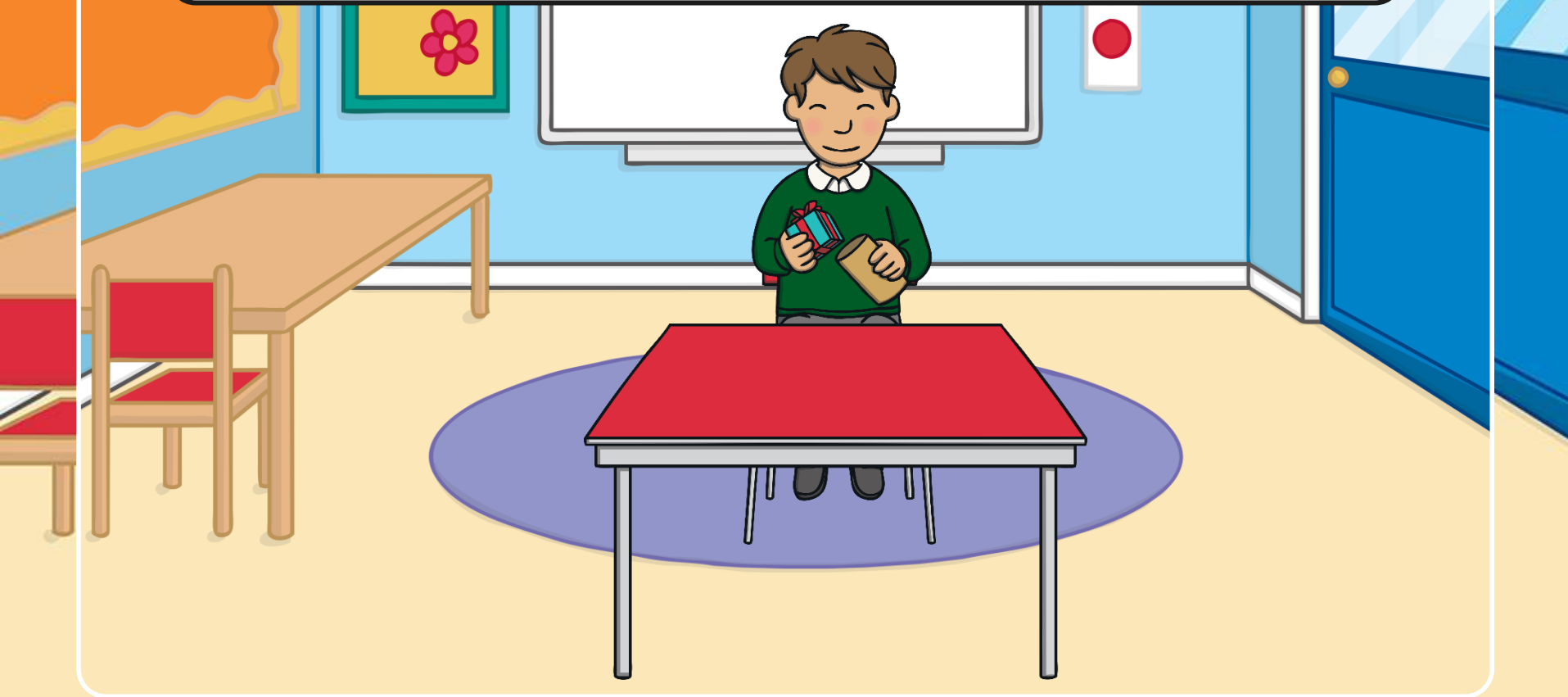
“I have **thought** this **through** and have an idea!” exclaimed a happy Kit to his group. His friends looked up in excitement waiting for Kit to continue.

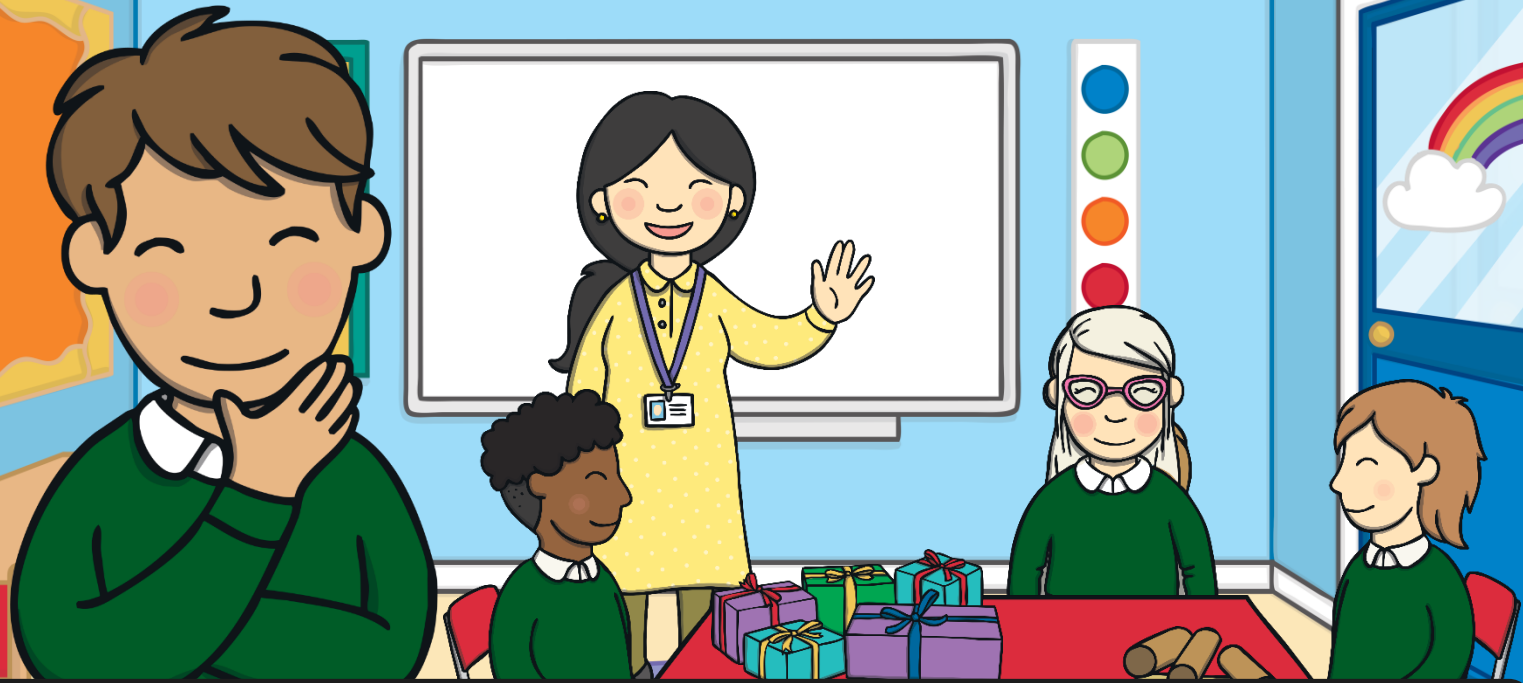
Sentence Time

What is Kit's idea?
Read the sentence then click 'Show' to reveal the answer!



We **could** make a chute for the presents to go **through**.





“That sounds like a great idea, Kit!” commented Mrs Tan who had been listening.

“Yes, I have thought it through... a chute to carry the presents from the elves to the back of the sleigh. I think Santa would love it!” said an excited Kit.

Today, we have learnt...

ch

saying /sh/

The adventure continues next lesson!

