

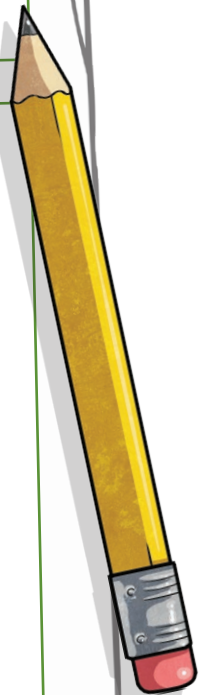
# Research

Before you begin this activity, decide on the biome you would like to focus on in your artwork. Research the biome thoroughly – you could use information books or the Internet. Then, use a sketching pencil to sketch and label animals and plants found in your chosen biome. These will be the animals and plants that will feature in your biome artwork. Remember only to sketch as these are just ideas and not your final piece – don't add too much detail!

My chosen biome: \_\_\_\_\_

Animals

Plants



# Illustrate a Biome Art Activity

## You will need:

- white paper
- A5 black card (half of A4)
- scissors
- sketching pencils
- colouring pencils
- fine black marker pen
- templates
- glue



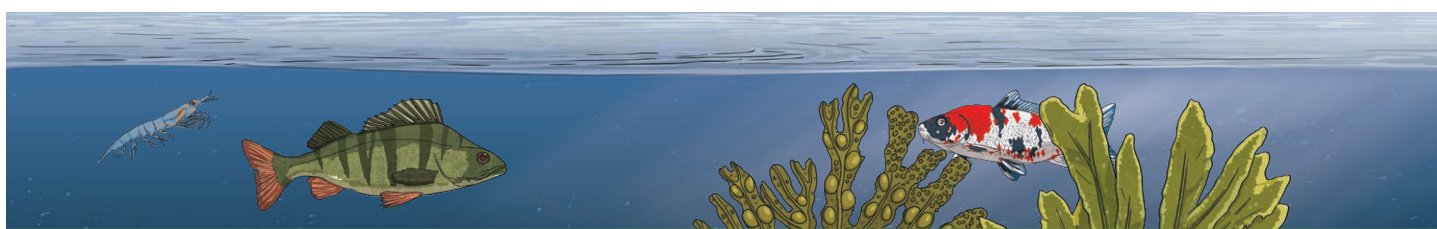
Fill in your research sheet. Make sure you include as many plants and animals found in your chosen biome as possible.

Then, select a template for your biome and cut it out carefully.



Place your template in the middle of the black card and trace around it with a pencil.

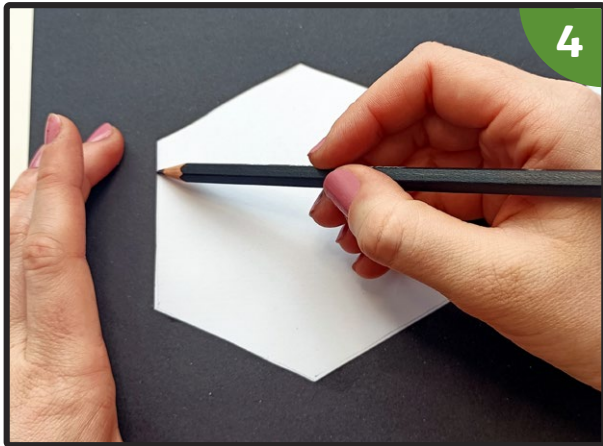
**Top Tip** – Hold the paper steady with the other hand to avoid movement and wiggly lines.



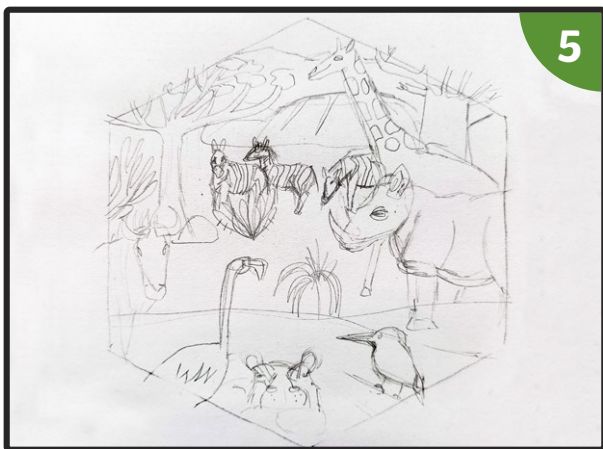




To create the black frame for your illustration, cut out the shape from the middle of your black card.



Place the now cut-out frame over your white piece of paper. Hold it down with one hand and, with a pencil, lightly trace the shape. This is where you will be drawing your biome scene.



Using pencil, sketch your biome scene. Look back at your research and try to include as many animals and plants as possible so that the illustration does not have empty spaces.

**Top Tip** – When drawing, make sure to go over the borders of the shape. This will mean that, once you add the black frame, there won't be any white edges.



Use colouring pencils to colour in your illustration; look at your research to check for patterns, colours and textures. Make sure to make the colours vibrant and check that there are no white spaces!





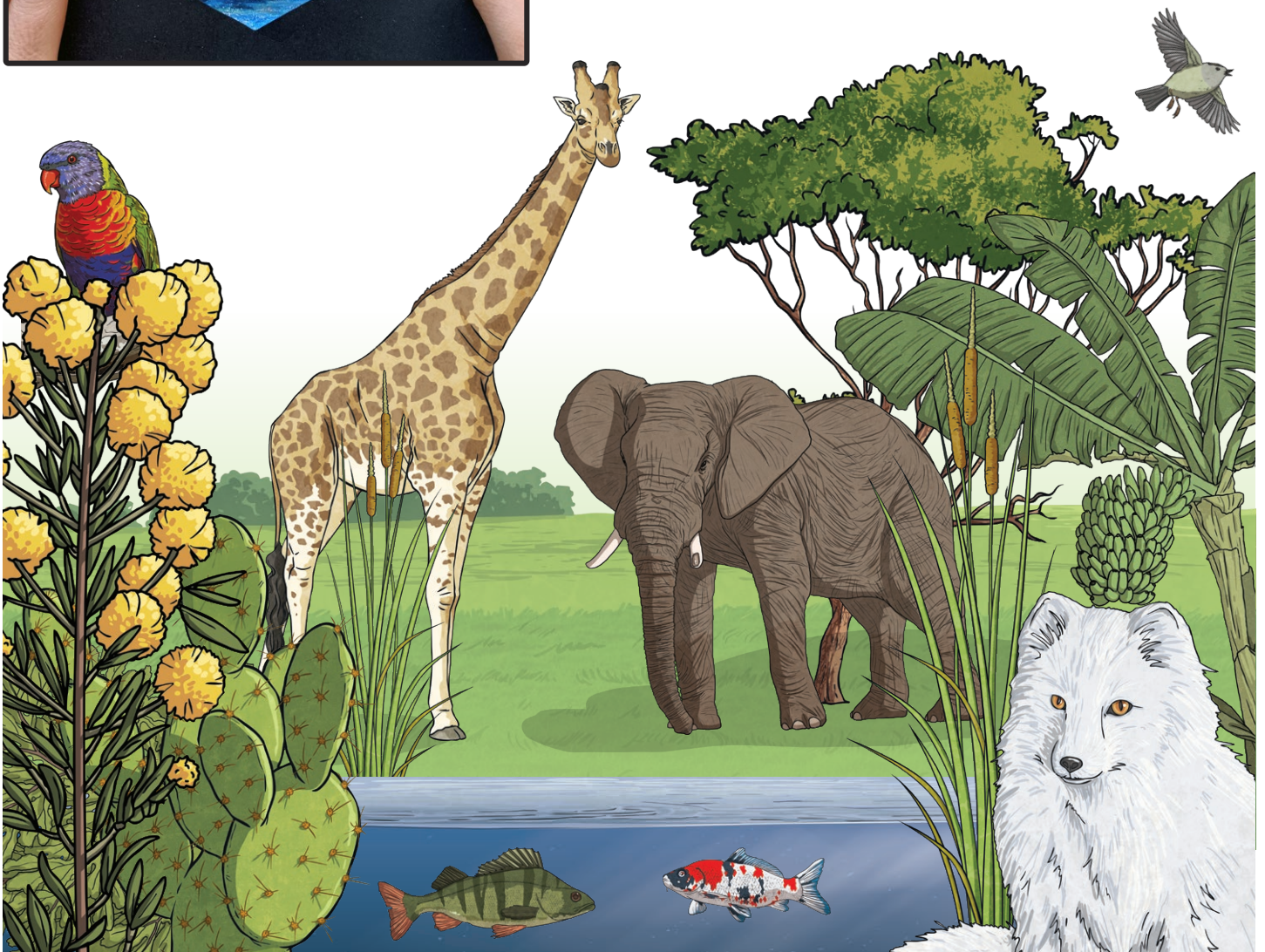
Once you have finished, put glue around the outside of your illustration and place the black frame over the drawing.

**Top Tip** – Place a piece of white paper over the picture and frame and smooth it out with your hand to make sure that the frame is glued down securely. This will stop the picture from smudging and the black frame won't get dirty.



Leave everything to dry.

If you like, you can ask an adult to trim the frame for you to make sure that the edges are neat and tidy.



# Biome Templates

